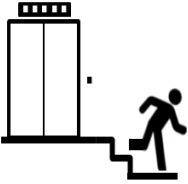


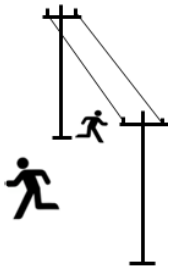
## Manual in case of emergency

### In case of earthquake



#### If you are indoors when shaking starts:

- Do not use elevators. Use stairs.
- Drop, cover and hold on.
- Stay away from windows, mirrors and heavy objects.
- Do not try to run out of the structure during strong shaking.



#### If you are outdoors when shaking starts:

- Move to a clear area.
- Stay away from power lines, buildings and trees.
- If you are driving, pull to the side of the road and stop.
- If you are on the beach, move to higher ground. An earthquake can cause a tsunami.



#### Once the earthquake shaking stops:

- Check the people around you for injuries.
- Provide first aid.
- Inspect your home for damage.



#### If you are trapped in debris:

- Move as little as possible so that you don't kick up dust.
- Tap on a pipe or wall so that rescuers can hear where you are.
- Use a whistle if one is available.

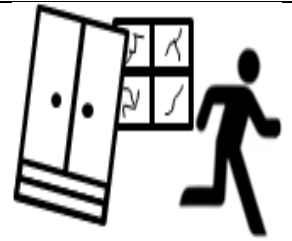
I. Read the manual in case of earthquake and write "T" (true) or "F" (false) for the statements below.

1. **Use** elevator when shaking starts. \_\_\_\_\_
2. **Move away from** power lines and trees. \_\_\_\_\_
3. **Find** a clear area when shaking starts. \_\_\_\_\_
4. **Run out** of the building during strong shakings. \_\_\_\_\_
5. **Give** first aid during the earthquake. \_\_\_\_\_
6. An earthquake **can trigger** a tsunami. \_\_\_\_\_

Date: \_\_\_\_\_

II. Make a drawing for each instruction.

*Example*  
Stay away from windows, mirrors and heavy objects.



1  
Do not run.

2  
Stay away from trees.

3  
Do not use elevator.

III. Match the columns in order to complete the instructions.

- |                         |   |
|-------------------------|---|
| 1. Stay away from...    | A. ( ) pull to side of the road and stop. |
| 2. Do not...            | B. ( ) buildings and trees.               |
| 3. Provide first...     | C. ( ) run during shaking.                |
| 4. If you're driving... | D. ( ) aid for someone in need.           |